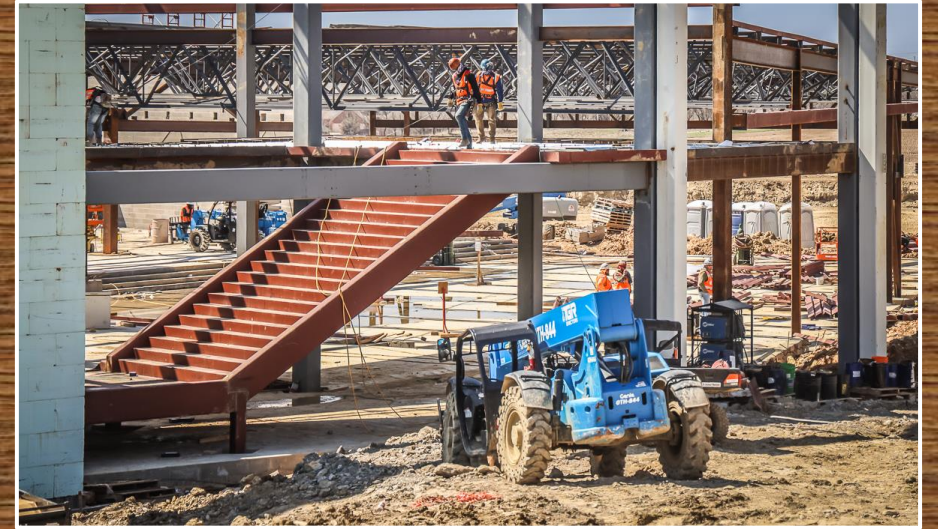




EAGLE MOUNTAIN HS



Retaining walls continue to progress in multiple areas around the site.



Work is progressing on the kitchen and cafeteria areas.





Work continues on the exterior of the main academic building.

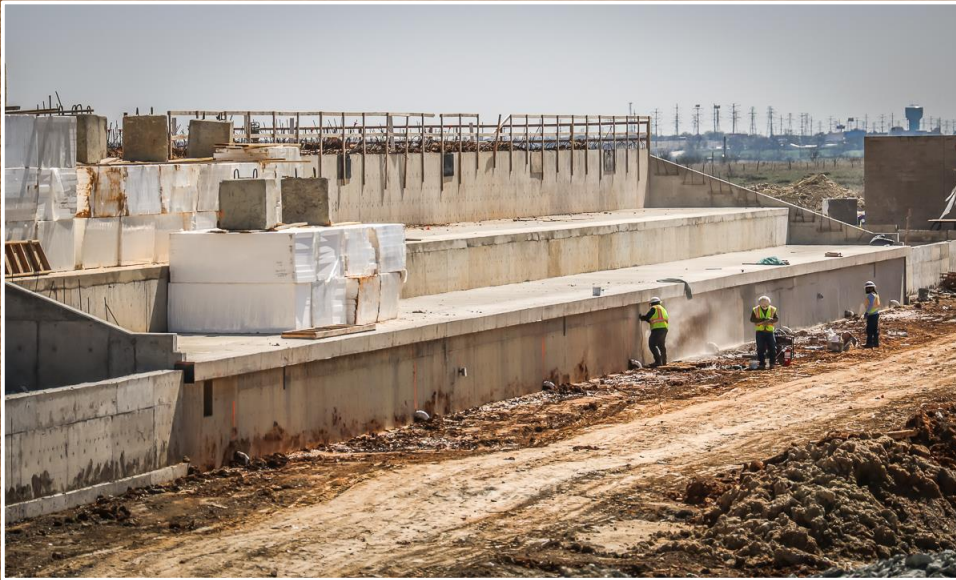


Interior metal studs continue to be installed along with rough-in mechanical and roofing on the main academic building.





Vertical work begins in the main gym area.



Concrete beams continue to be poured to support the seating for the home and visitor stands.



The roof has been completed in the multi-purpose building. CMU block has begun on the walls.





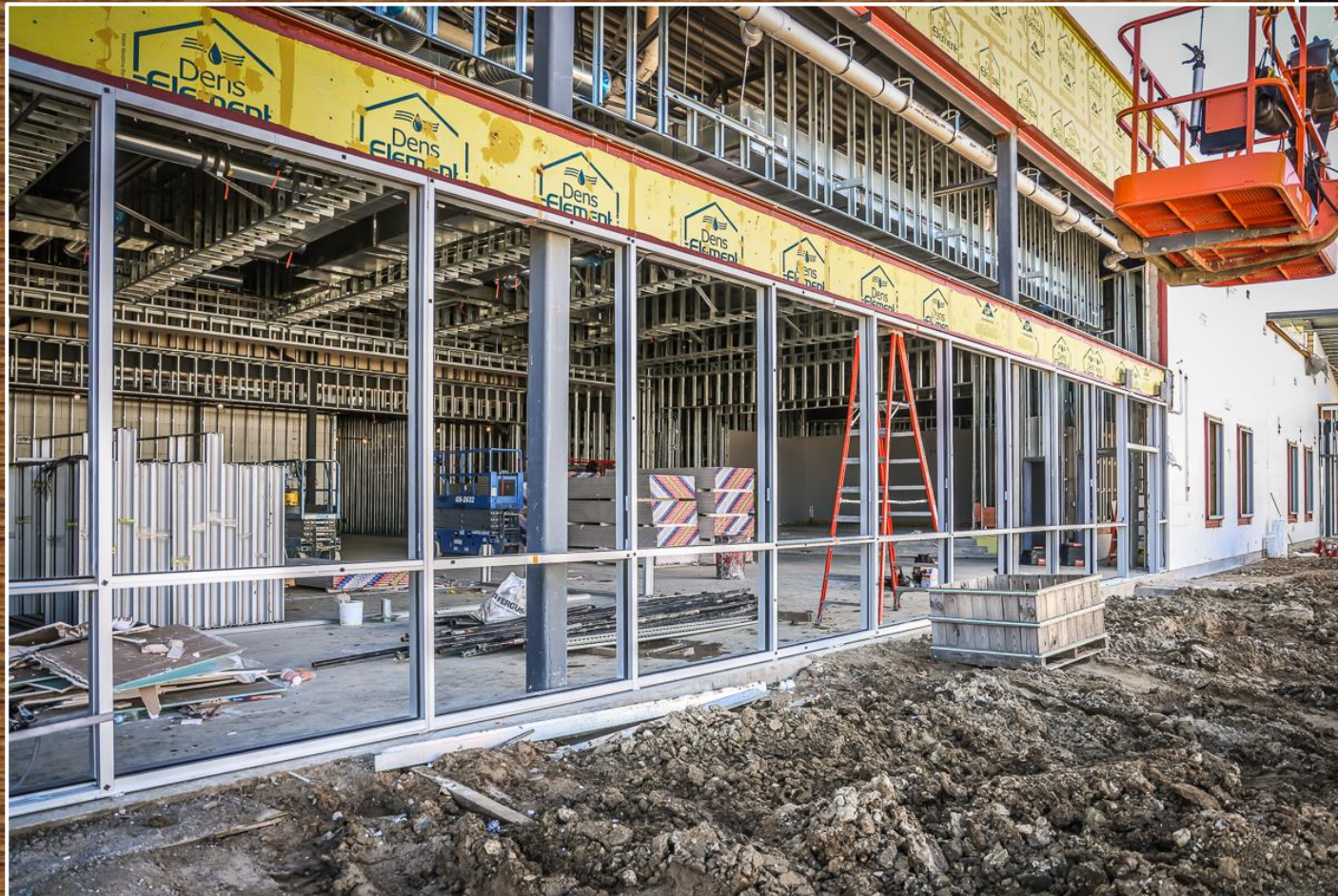
ELIZABETH LOPEZ HATLEY ES

Main entrance and library continue with rough-in mechanical work. The roof on the library have been completed.

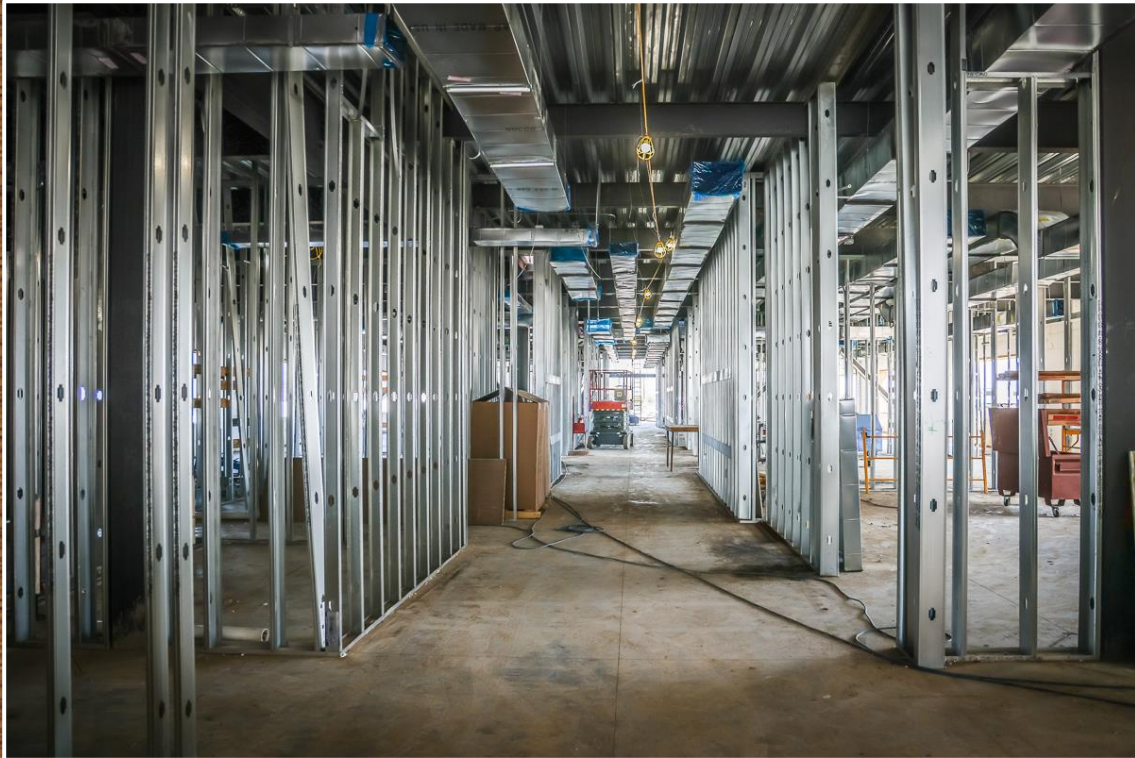




Brick on the exterior of the gymnasium has begun. CMU block is complete in the gym and mezzanine areas.



Storefront frames have been installed in the cafeteria. Landscaping, trenching, and main lines are being installed.



**Sheetrock has started in the office area.
Interior metal studs are progressing in the
academic areas.**



Work continues on the mezzanine platform on the two academic wings.